

INTEGRAL SHIPPING & LOGISTICS INC.



LATEST SCENARIO

Snapshot

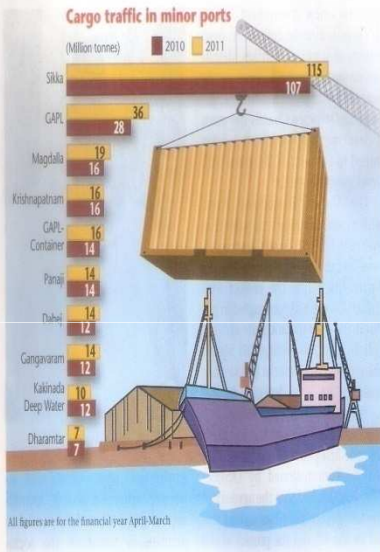
BUSINESS INDIA • July 24, 2011

It's flat and almost still ...

...but the cargo traffic in Indian ports is expected to grow healthier this year

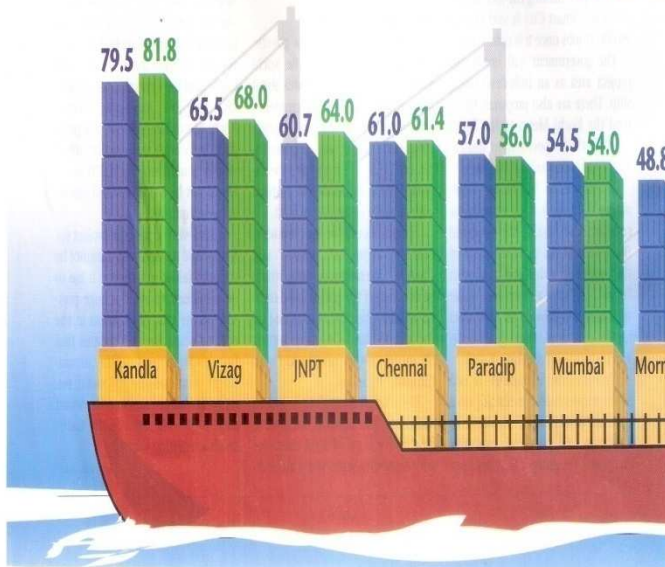
Increased commercial activity and industrial output – signs of economic recovery – have not been reflected in the movement of cargo traffic in the country in the past year. Cumulative cargo traffic growth in all the ports remained flat at 894.35 million tonnes (mt), only 5.02 per cent higher than the 849.89 mt in the previous year.

Traffic in the major ports stood at 569.91 mt this year, 1.57 per cent higher than 561.09 mt in the previous year. Around 60 per cent or 331.71 mt of this was handled by Paradip, Visakhapatnam, Chennai, JNPT and Kandla ports. One of the main factors affecting traffic was the ban on iron ore exports in Karnataka in the wake of allegations of illegal mining in July 2010. As iron ore constitutes nearly 18 per cent of the cargo traffic in the country, this had a visible impact on traffic. Although the Supreme Court lifted the



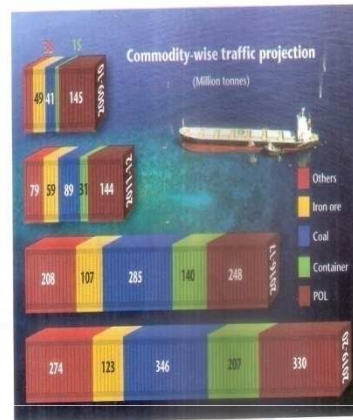
All figures are for the financial year April-March

Traffic handle



BUSINESS INDIA • July 24, 2011

Snapshot



ban in February this year, cargo movement in ports like New Mangalore, Mormugao and Chennai was adversely affected.

Also, the supply of coal to Tamil Nadu Electricity Board (TNEB) has been lower this year. Coal constitutes nearly 15 per cent of the total cargo traffic in the country, and TNEB's consumption is high, so the impact was visible.

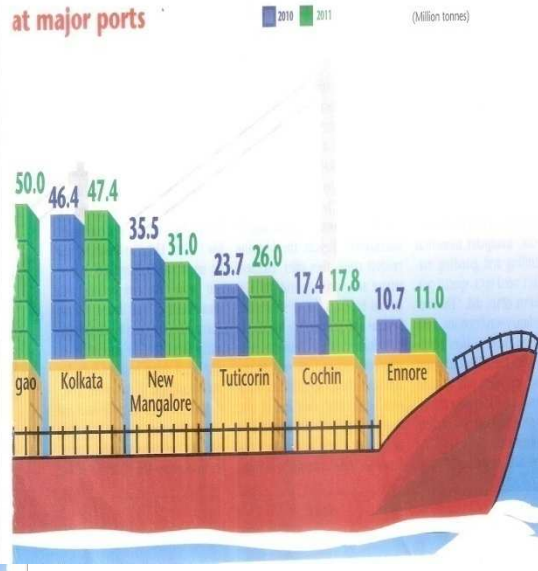
Increasing congestion in major ports has seen a surge in traffic in non-major ports in the past year. When these ports (also known as state or minor ports), like GAPL (Gujarat Adani Port Ltd, now Mundra Port and SEZ Ltd), Sikka, Magdalla, Krishnapatnam, Panaji, Dahej and Gangavaram to name a few, commenced operations, their share in cargo traffic stood at 7

per cent. This figure leapt to 32 per cent in 2010-11. "The reason minor ports developed by private parties are doing well is that these private developers are quick to identify cargo demand-supply gap and are able to fill them," says Ramesh Singhal, director, I-maritime, stating the reason for the sudden spurt in traffic. "Ports like Gangavaram, Krishnapatnam and Karaikal are capturing clients and traffic that are underserved by major ports of Visakhapatnam and Chennai respectively." Gujarat, which has 40 state ports, handles almost 75 per cent of the traffic of minor ports.

However, despite the dismal performance in the year gone by, there is reason to believe that there will be a healthy growth in traffic this year, triggered by robust growth in coal traffic due to expectations of higher demand from the steel and power sectors and an 18-20 per cent rise in foreign trade. "We expect the cargo traffic at the ports to grow by 9 per cent to 974.81 mt in 2011-12," says A. Janardhana Rao, managing director, Indian Ports Association.

• APTI B. RAU

at major ports



Source: Indian Ports Association



Our Philosophy

To be a trusted partner in progress providing Cost effective integrated logistics delivery solutions consistently through superior customer service and use of advanced technology.

To provide Consistent, Reliable, Flexible & Continuous service to our customers with a smile.

Our Credentials

A professionally managed Company offering expert services to ship owners, exporters and importers.

Superior quality of service and total commitment to our clients and principals. Also provide cost effective solutions to client and principals Experienced professionals and specialists in every business activity.

Comprehensive logistics support.

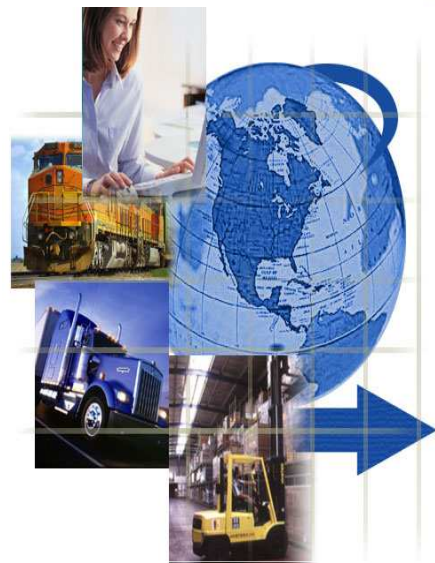


Integral Shipping is a Global Forwarder, & Logistics Solutions Facilitator.

We aim at offering an attractive package of service in freight management customized and individualized to meet your every need from the planning stages of cargo movement to its ultimate destination, economically and safely.

**Cargo transportation made easy
On time every time**

**Your choice your success
Service with a smile**

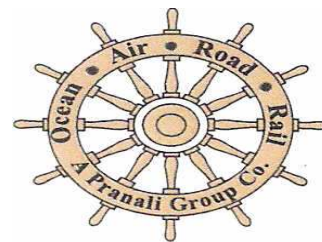




International Freight Forwarding

SEA FREIGHT

- We can issue FMC regd B/L on behalf of our principal.
- FCL Services to and from American, European, Indian & South East Asia destinations, through global freight contracts.
- Direct LCL consolidation to and from various destinations Door to Door Services.
- Consolidated Freight Transportation (Sea – Air)
- Import Consolidation Services Cargo Nominations.
- Trans -shipment services i.e. pre-alert through worldwide network of agents.



www.isliglobal.com



Customs Clearing and Forwarding

- **Associated with Regd Custom License – No.**
- **2 Authorized signatories (Rule 9& Rule 8)**
- **4 “G Card holders”- Senior Executives – Exclusive client handling**
- **Impeccable track record of over 20 years with Port & Customs**
- **Excellent Rapport and Recognition with Port and Customs Official**
- **Servicing loyal clientele over 2 decades and consistently**
- **Clientele includes various MNC, Big Industries, Star Export Houses and ACP (Accredited Client Program with Customs)**
- **Dedicated division with over 15 member with an average of 10yrs experience.**
- **Employs State of the art IT Infrastructure and Software for filing and processing.**
- **Dedicated Customer Service for updating status and client servicing.**



Profile of Commodities Handled

DRY BULK COMMODITIES

- Rice
- Sugar
- Wheat Flour
- Barytes
- Quartz
- Silica Sand
- Iron Ore
- Cobble Stones
- Slates/Tiles/Granite blocks
- Cement/Limestone

LIQUID BULK

- Molasses
- Petrochemical Products
- Edible Oils

INDUSTRIAL PRODUCTS

- Calcium Carbide
- Industrial Wax
- Paraffin Wax
- Engineering Goods
- Automatic Door Components
- Alarms and Security components

PROJECT CARGOES

- Textile Machinery
- Over dimensional Cargo
- Construction Equipments

CONSUMER PRODUCTS

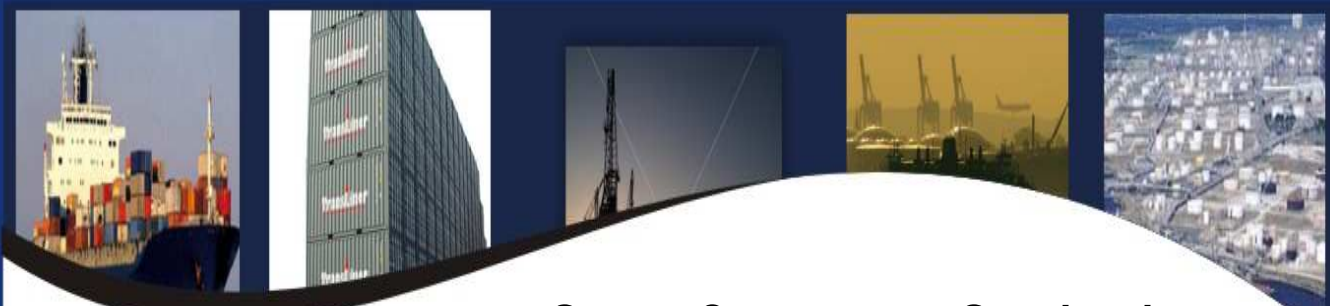
- Processed Cashew Kernels
- Food Stuff



AIR FREIGHT

- **Air Import Consolidation Services.**
- **Competitive Air Rates from Airlines.**
- **Air Charters.**
- **World wide network.**





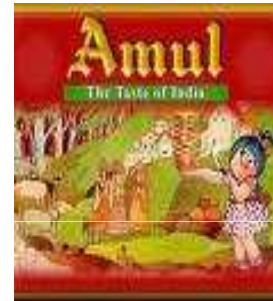
Some Corporates Serviced



ITC FOODS



Good Food, Good Life



The Ice Cream Experts

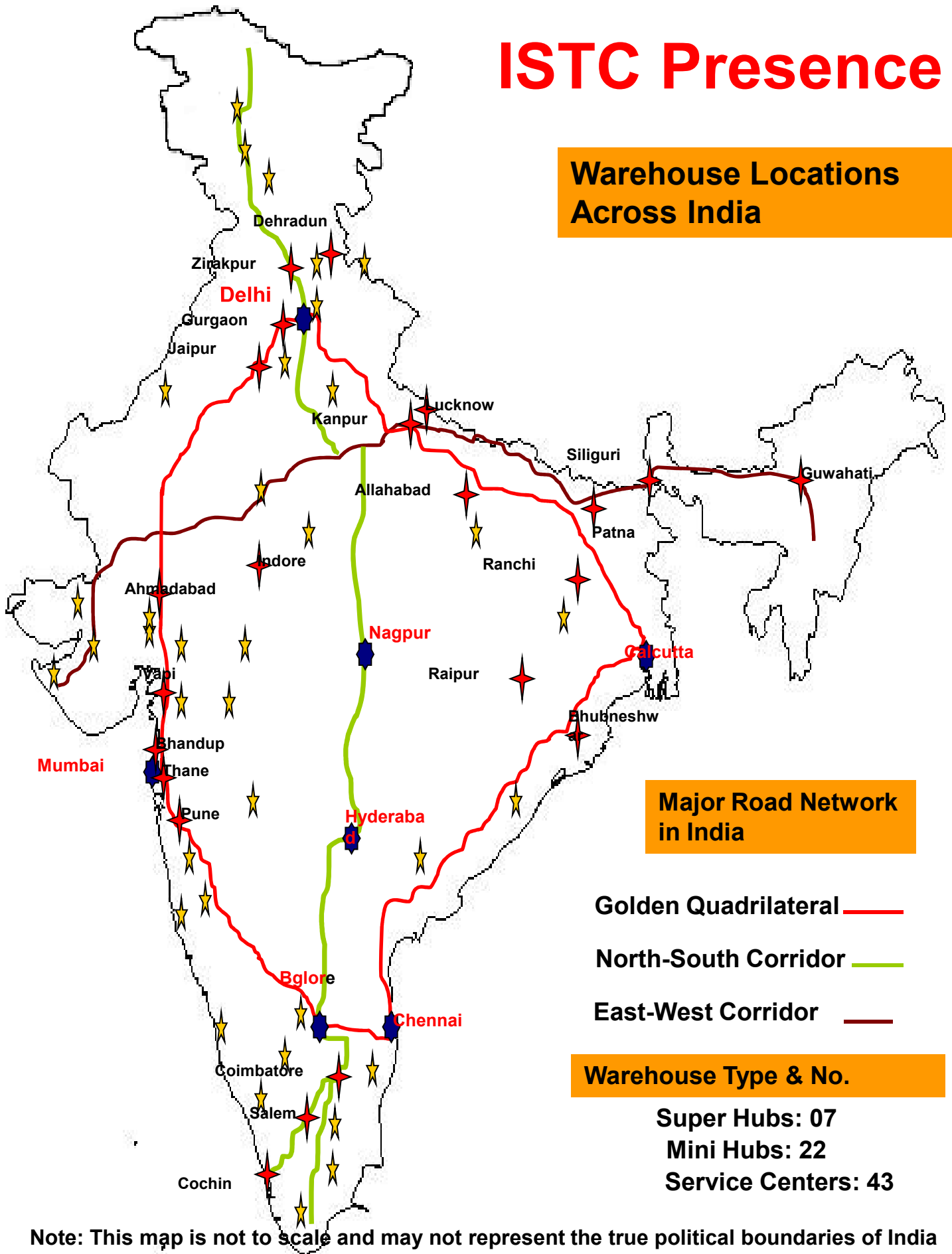


GUINNESSUDV



ISTC Presence

Warehouse Locations Across India



Note: This map is not to scale and may not represent the true political boundaries of India

SERVICES

- Our story goes way back in 1995 when our founder chairman Mr. Neal decided to enter the Shipping and Logistics world. It was his foresight to go for expansions in various areas under the 4 pl strategy – all outsourced services, without any capital expenditure towards equipments , such as cranes, containers, haulers, warehouses and yet we achieved the pinnacle in Dry / Reefer container business right from shipments of Ready to Eat food from Malaysia to US/UK Grocery Stores, or White Cottage Cheese from Punjab to Dubai, Macdonalds – Tikkis from Mumbai to Dubai or say Import of Microwave Trays from UK- Dupont to India as samples for development. As a medium-sized business enterprise, he ensured that *ISL* should be entirely dependent on its own abilities. He was one of the strong pillars of our organisation and during his existence he gave free hand to his employees to pursuit their targets and achieve the goals. This independence combined with flexibility and proximity to the customer are the three key components of our company philosophy. This vision of his enabled us to serve our customers in the long-term with a high level of individuality.... more on www.isliglobal.com

- Ocean Freight :

- We offer you the best reasonable rates for 20ft, 40 ft, reefer and other types of containers for your cargo. The rates are offered from Liners directly and we arrange for long term rate filing contracts with the Liners for better realisation of your freight component costs. We deal with following lines: Maersk, APL, NYK, OOCL, MSC, Evergreen, Hyundai, K-line, Hanjin, Zim And may others to name with. more on www.isliglobal.com

- Air Freight:

- We cater import export and domestic cargo shipments. We offer Direct shipments on the first available flight , Consolidated shipments, saving you money when your deadlines are less tight , Pre-allocated space with a choice of airlines ,Secure warehousing ,Packing,Pre-shipment inspection,Out-of-hours clearance available , and door to door services.

- Railway Freight :

- Railway plays a very prominent role in the recent times as the modal split between rail and road has shifted from 80:20 to 40:60 . Substantial volume 'transit-sensitive' general goods traffic that typically needed to be consolidated went over to road because of several perceived advantages. The advantages of rail for long and heavy hauls are clear. By contrast, the road situation today is marked by poor maintenance, congestion and delays (38% of travel-times spent waiting at check posts). Given a choice, the shipper is willing for a modal shift, if one can guarantee speed, safety and ensure reliability. This is what Integral shipping does with help oc container corporation of india – www.concorindia.com

- Warehousing and Bonded Warehousing & Reverse Logistics :

- Warehousing and Bonded warehousing are the most integral part completing the supply chain management cycle. We cater to both type of services as we have to offer following support services. Public bonded & general warehousing
- Forwarding & shipping (Import & Export)
- Transportation services
- Freight consolidation (Air/Sea/Rail)
- Transshipment
- Product repacking & relabelling
- Bulk breaking
- Arrangement for General Insurance coverage
- Arrangement for security armed guard escort .



- In addition to these we also assist in Preparation & obtaining of CT-3 for duty free indigenous purchases and their formalities on the arrival of goods at factory/unit to avoid duty demand. Permission for Sub-contracting. Permission for Broad binding. Disposal of Scrap/Waste with prior permission of respective authorities. Guideline for EXPORT procedure. Guideline for Maintaining records / accounts of Custom/Excise registers & other paper work.
- Registration for local / central Sales Tax, Getting set off for local sales tax / re-imburement of Central Sales Tax. Procedure related to Advance DTA Sales / DTA Sales. Procedure regarding re-export / replacement of imported / Indigenous goods. Guideline for filing Monthly, Quarterly/Annually returns to respective authorities. Guideline for De-Bonding. And other incidental matters & Paper work time to time.

-

Road Freight & Domestic Transportation :

The main objective of offering a seamless chain for the export import cargo is the timing with delivery schedules . The product can be delivered by single point transport form or multimodal format. At ISLI “we study the entire chain of events to be set before embarking on the actual transport job. This can be involvement of Heavy Tonnage Project Transportation by way of 80 feet long trailers of high bed low bed trolleys each duly entrusted with route maps. The movement of commodities such as Bulk, Raw material, Semi finished, Finished goods, FMCG ,Rubber, Chemicals, Powder ,Electronics,Machines and construction equipments are transported through our network of Road, Rail, Air and Bus agents.The appropriate mode is chosen depending on the urgency of the cargo and delivery schedules. On The domestic scene it is the linking of long haul consignment with break in journey. This is a universal fact that long haulers are not available all the times – so we at “Integral Shipping” have developed transshipment hubs to cater to the transshipment procedures ensuring smooth and uninterrupted journey of the cargo. Usual time of cargo transshipment is 2 hours from the time of receipt.



Phonographic Alphabet

Project Managed & Run By *ISLI*



100% OF BOUNDRY WALL HAVE BEEN CONSTRUCTED AND THE BALANCE HAVE BEEN KEPT OPEN ON TAILOR MADE BASIS REQUIREMENT FROM ESTEEMED CUSTOMERS LIKE YOU.

Letter	Pronunciation	Letter	Pronunciation
A	ALFA	N	NOVEMBER
B	BRAVO	O	OSKAR
C	CHARLY	P	PAPA
D	DELTA	Q	QUEBEC
E	ECHO	R	ROMEO
F	FOXTROT	S	SIERRA
G	GOLF	T	TANGO
H	HOTEL	U	UNIFORM
I	INDIA	V	VICTOR
J	JULIETT	W	WHISKY
K	KILO	X	X-RAY
L	LIMA	Y	YANKEE
M	MIKE	Z	ZULU

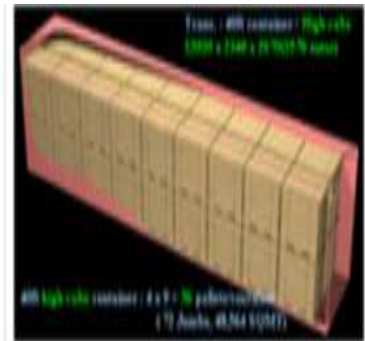
Special Equipments



Tank Container



Flat rack Container



A 40ft HC Container & Stowage of Cargo Inside